

IWW - JACKSONVILLE TO MIAMI BAKERS HAULOVER INLET DADE COUNTY, FLORIDA PROJECT CONDITION SURVEY 8, 10 AND 11-FOOT PROJECT FY23

SURVEY NOTES

- REFER TO SURVEY NO. 22-196.
 - TIDAL REDUCTIONS WERE OBTAINED UTILIZING A REAL-TIME KINEMATIC (RTK) GPS AND REFERENCED TO MLLW UTILIZING A HYPACK KINEMATIC TIDE DATUM (KT) MODEL. FILE NAME: "BROWARD-MIAMIDADE-MONROE-COLLIER_2018_05_02.KTD".
 - ALL ELEVATIONS ARE BELOW THE CHART DATUM UNLESS PRECEDED BY A (+) SIGN.
 - PLANE COORDINATES ARE BASED ON THE TRANSVERSE MERCATOR PROJECTION FOR THE EAST ZONE OF FLORIDA AND REFERENCED TO THE CURRENT REALIZATION OF THE NORTH AMERICAN DATUM OF 1983 (NAD83), BASED ON THE NOAA NATIONAL SPATIAL REFERENCE SYSTEM (NSRS).
 - ALL STATIONING REFERS TO THE CENTERLINE OF THE CHANNEL.
 - THIS SURVEY WAS PERFORMED USING REAL-TIME KINEMATIC (RTK) GPS POSITIONING WITH THE FOLLOWING REFERENCE BASE LOCATION:
REFERENCE BASE LOCATED AT "WDA 7 RM 1" (PID: AC2387)
 - DEPTHS DEPICTED BY THIS SURVEY ARE REFERENCED TO MLLW, TIDAL EPOCH 1983-2001 AS REPORTED BY THE NATIONAL OCEANIC AND ATMOSPHERIC ADMINISTRATION (NOAA). A MODIFIED VERSION OF NOAA'S VDATUM MODEL WAS USED TO CALIBRATE TO THE PUBLISHED MLLW HEIGHTS OF THE BENCHMARKS BELOW:
NOAA TIDAL STATION "872 3080" USED FOR ENTIRE PROJECT.
VERTICAL MEASUREMENTS WERE MADE USING AN EDGETECH 6205 COMBINED MULTI-BEAM / SIDESCAN AND AN ECHOTRAC E20 DUAL-FREQUENCY 28/200 KHZ SINGLE-BEAM TRANSDUCER. ALL SOUNDINGS SHOWN ARE IN HIGH FREQUENCY.
- | VESSEL | DATE OF SURVEY | CUT |
|--------|----------------|------------------------|
| SB-44 | 07 DEC 2022 | IWW CUT DA-9, CUTS 1-4 |
- AIDS TO NAVIGATION WERE LOCATED DURING THIS SURVEY.
 - THE INFORMATION DEPICTED ON THIS MAP REPRESENTS THE RESULTS OF SURVEYS MADE ON THE DATES INDICATED ABOVE AND CAN ONLY BE CONSIDERED AS INDICATING THE GENERAL CONDITIONS AT THAT TIME. THIS CHART IS SOLELY FOR THE DISTRIBUTION OF AVAILABLE DEPTHS AT THE TIME OF THE SURVEY.
 - SURVEY ACCURACY PERFORMANCE STANDARDS, QUALITY CONTROL, AND QUALITY ASSURANCE REQUIREMENTS WERE FOLLOWED DURING THIS SURVEY IN ACCORDANCE WITH USACE EM 1110-2-1003, HYDROGRAPHIC SURVEYING, 30 NOV 2013.
 - SURVEY PERFORMED BY SEASIDE ENGINEERING AND SURVEYING, LLC (SEAS) UNDER CONTRACT NO. W912EP-19-D-003.

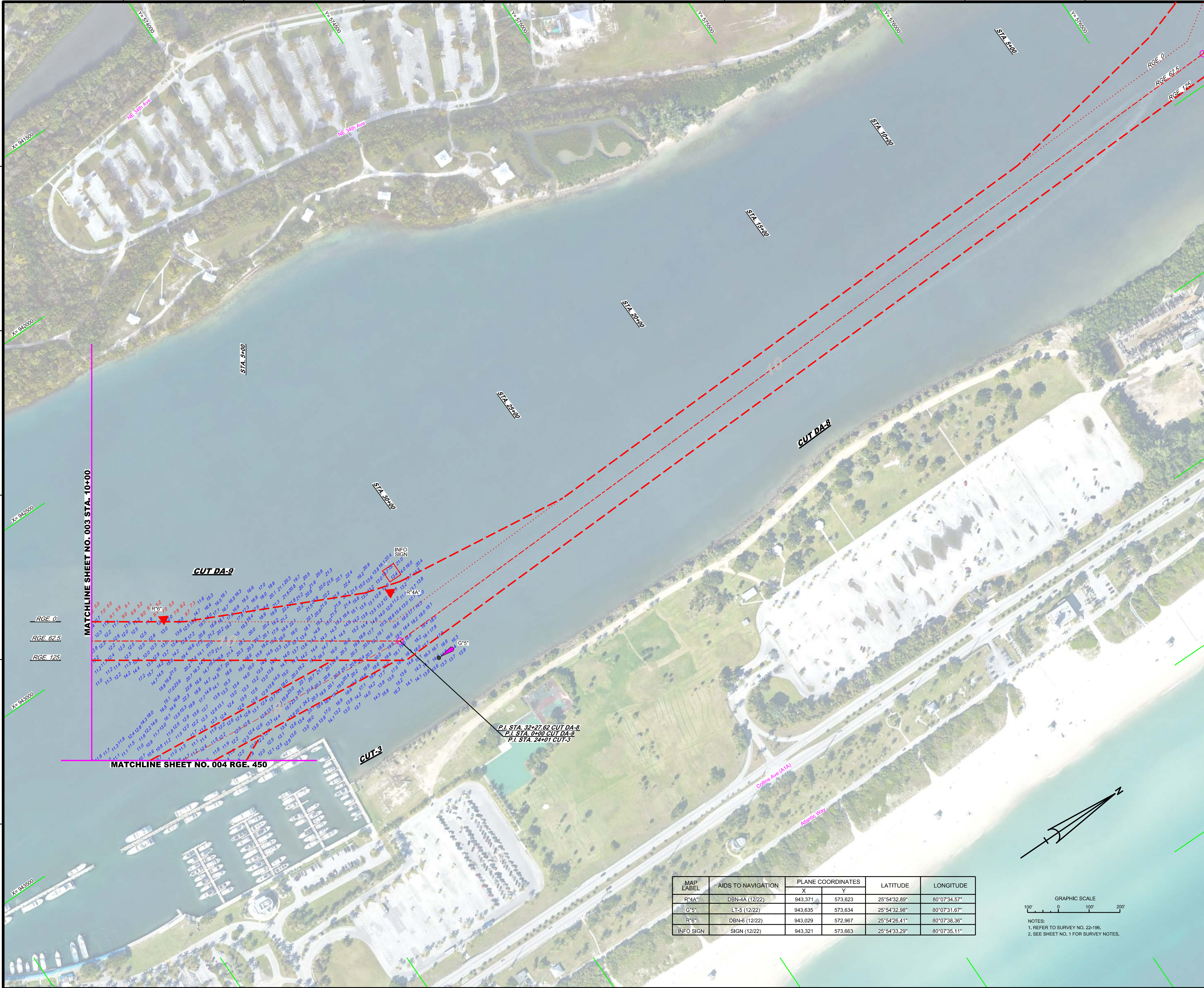
LEGEND	
	MONUMENT
	LIGHTED BEACON
	GREEN DAYBEACON
	RED DAYBEACON
	RED LIGHTED BUOY
	GREEN LIGHTED BUOY
	CAN BUOY
	NUN BUOY
	TIDE STAFF
	PROJECT DEPTH

US Army Corps of Engineers
Jacksonville District
SAFETY ON THIS JOB
DEPENDS ON YOU

DEPARTMENT OF THE ARMY
JACKSONVILLE DISTRICT, CORPS OF ENGINEERS
JACKSONVILLE, FLORIDA

INTRACOASTAL WATERWAY / BAKERS HAULOVER INLET
JACKSONVILLE TO MIAMI, FLORIDA
DADE COUNTY
**PROJECT CONDITION SURVEY FY23
8 AND 10-FOOT PROJECT**
INDEX, LOCATION AND VICINITY
MAP

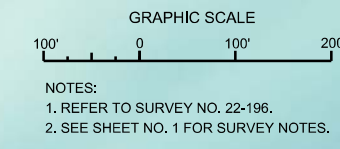
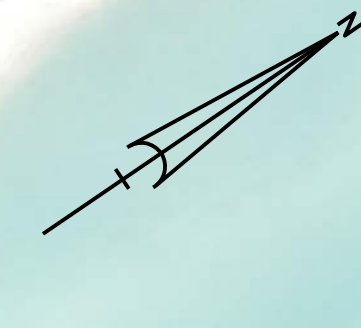
Scale: AS SHOWN
Drawing no.
1 / 4
SHEET 01 OF 08



Department of the Army
 Jacksonville District, Corps of Engineers
 Jacksonville, Florida

Project: INTRACOSTAL WATERWAY / BAKERS HAULOVER INLET
 Jacksonville to Miami, Florida
 Dade County
**PROJECT CONDITION SURVEY FY23
 8 AND 10-FOOT PROJECT**
 STA. 0+00 CUT DA-8 THRU STA. 10+00 CUT DA-9
PLAN

MAP LABEL	AIDS TO NAVIGATION	PLANE COORDINATES		LATITUDE	LONGITUDE
		X	Y		
R*4A	DBN-4A (12/22)	943.371	573.623	25°54'32.89"	80°07'34.57"
G*5	LT-5 (12/22)	943.635	573.634	25°54'32.98"	80°07'31.67"
R*6	DBN-6 (12/22)	943.029	572.987	25°54'26.41"	80°07'38.36"
INFO SIGN	SIGN (12/22)	943.321	573.663	25°54'33.29"	80°07'35.11"



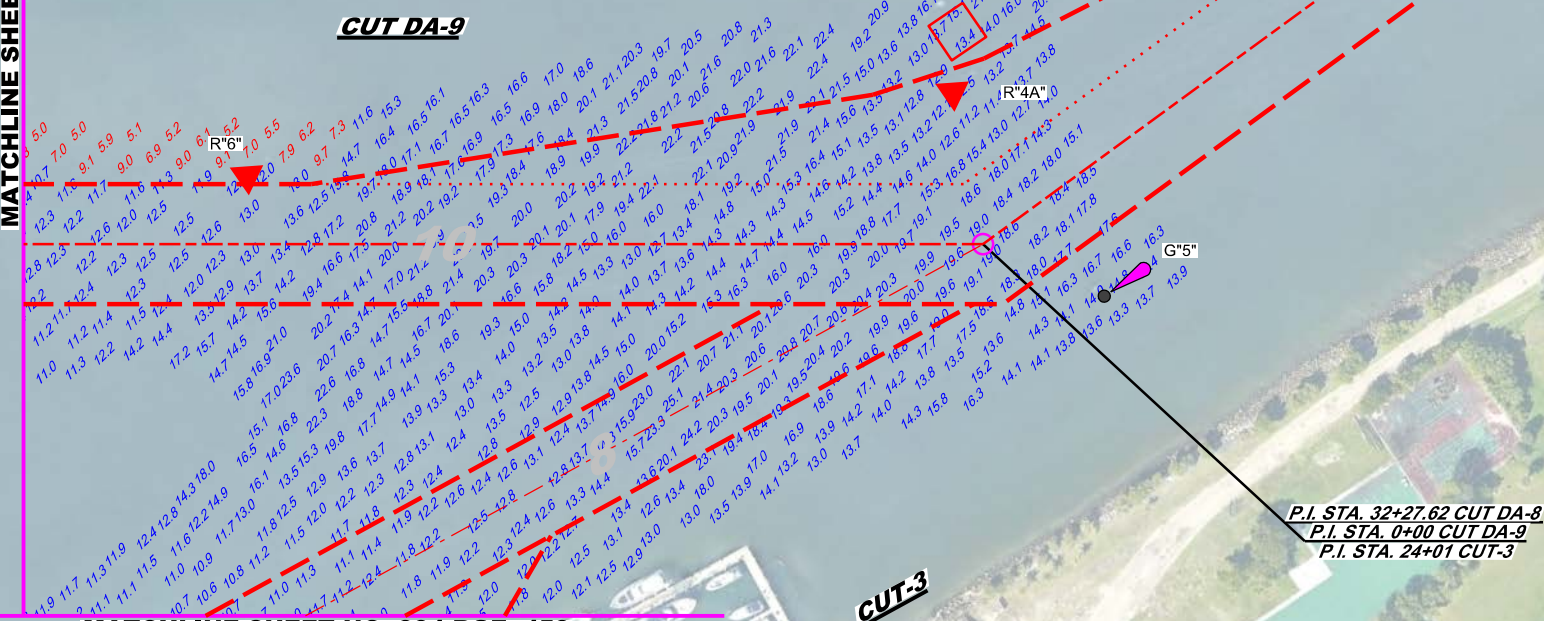
NOTES:
 1. REFER TO SURVEY NO. 22-196.
 2. SEE SHEET NO. 1 FOR SURVEY NOTES.

MATCHLINE SHEET NO. 003 STA. 10+00

MATCHLINE SHEET NO. 004 RGE. 450

RGE. 0
 RGE. 62.5
 RGE. 125

P.I. STA. 32+27.62 CUT DA-8
 P.I. STA. 0+00 CUT DA-9
 P.I. STA. 24+01 CUT-3



CUT DA-9

CUT DA-8

CUT-3

INFO SIGN

G*5

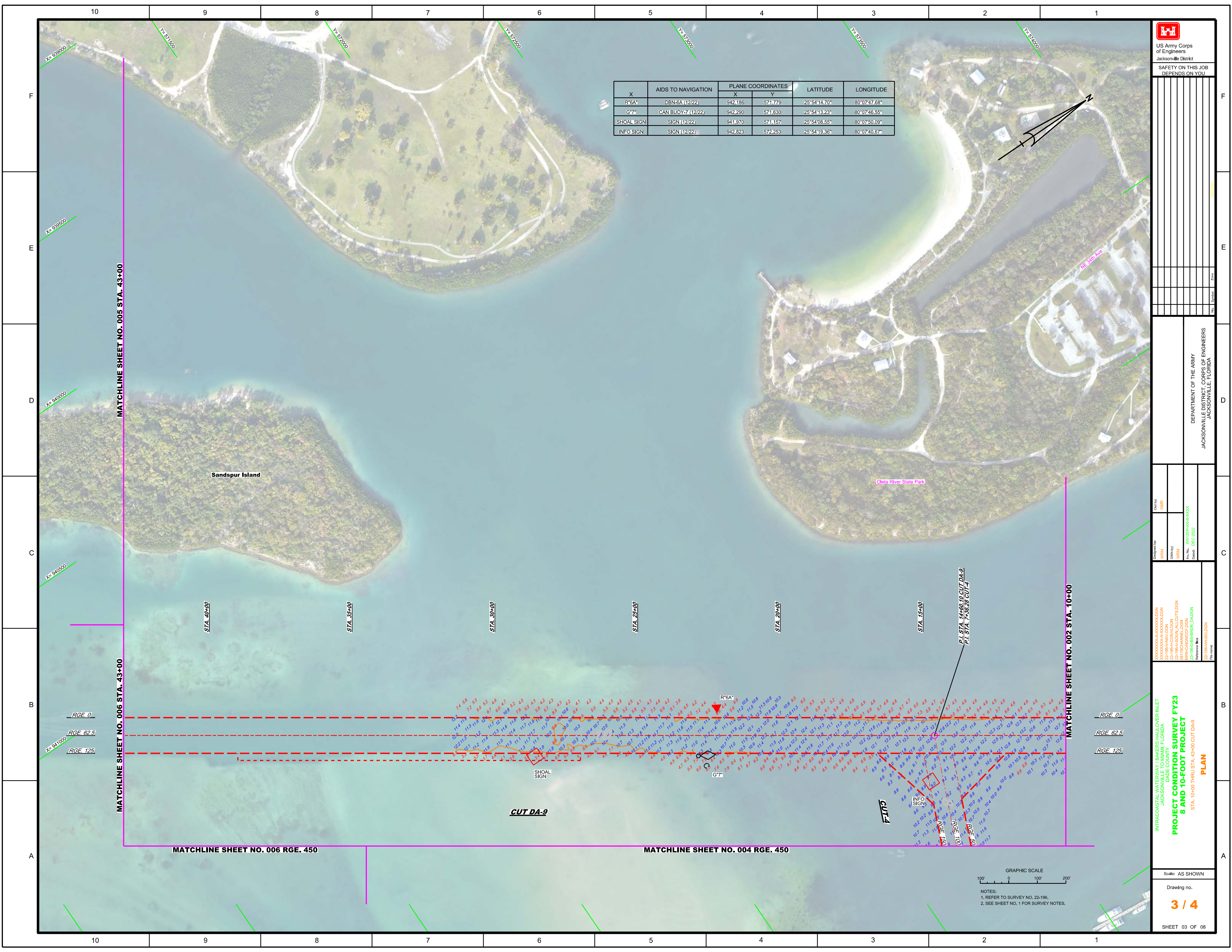
F
E
D
C
B
A

F
E
D
C
B
A

10 9 8 7 6 5 4 3 2 1

10 9 8 7 6 5 4 3 2 1

X	AIDS TO NAVIGATION	PLANE COORDINATES		LATITUDE	LONGITUDE
		X	Y		
R'6A	DBN-5A (12/22)	942,186	571,779	25°54'14.70"	80°07'47.68"
G7	CAN BUOY-7 (12/22)	942,290	571,630	25°54'13.23"	80°07'46.55"
SHOAL SIGN	SIGN (12/22)	941,970	571,157	25°54'08.55"	80°07'50.09"
INFO SIGN	SIGN (12/22)	942,823	572,253	25°54'19.36"	80°07'40.67"



MATCHLINE SHEET NO. 005 STA. 43+00

MATCHLINE SHEET NO. 006 STA. 43+00

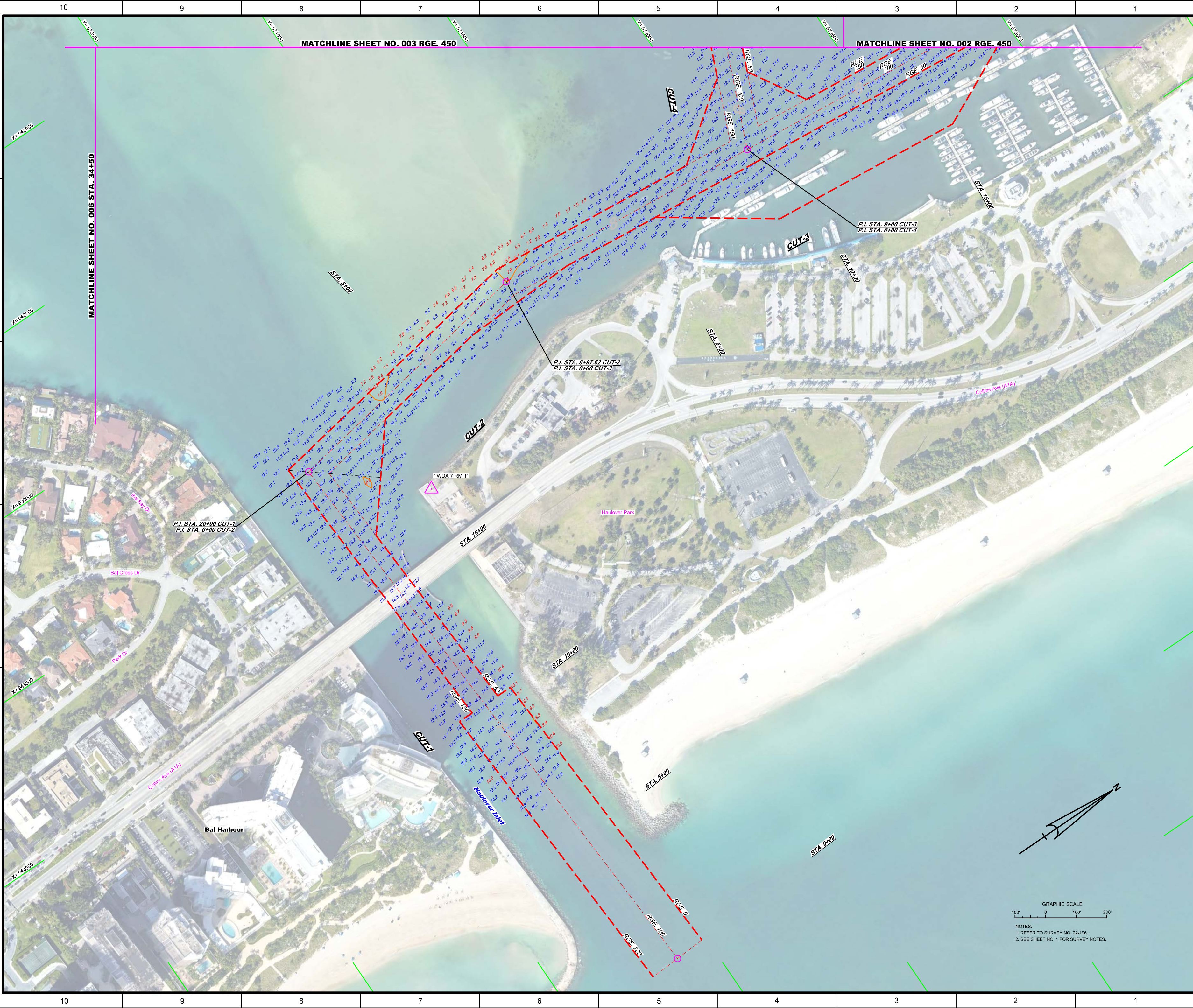
MATCHLINE SHEET NO. 002 STA. 10+00


MATCHLINE SHEET NO. 006 RGE. 450

MATCHLINE SHEET NO. 004 RGE. 450

RGE. 0
RGE. 62.5
RGE. 125

GRAPHIC SCALE
100' 0 100' 200'
NOTES:
1. REFER TO SURVEY NO. 23-196.
2. SEE SHEET NO. 1 FOR SURVEY NOTES.

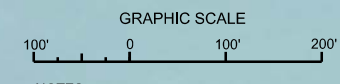



 US Army Corps of Engineers
 Jacksonville District
 SAFETY ON THIS JOB
 DEPENDS ON YOU

DEPARTMENT OF THE ARMY
 JACKSONVILLE DISTRICT, CORPS OF ENGINEERS
 JACKSONVILLE, FLORIDA

Designed By: WRM	Checked By: GHR
Drawn By: WRM	Date: DEC 2022
File No: 22-186A-CON-11.DGN 22-186A-CON-11.DGN 22-186A-CON-11.DGN 22-186A-CON-11.DGN	Project No: 22-186A-CON-11

INTRACOASTAL WATERWAY / BAKERS HAULOVER INLET
 JACKSONVILLE TO MIAMI, FLORIDA
 DADE COUNTY
**PROJECT CONDITION SURVEY FY23
 8 AND 10-FOOT PROJECT**
 RGE 450 CUT D4-9 TO SHORELINE, STA 0+00 CUT-1 THRU
 STA 15+54.6 CUT-3 AND STA 0+00 THRU STA 34+14 CUT-4
PLAN



NOTES:
 1. REFER TO SURVEY NO. 22-196.
 2. SEE SHEET NO. 1 FOR SURVEY NOTES.